

MONOCLONAL ANTIBODY DATASHEET



Clone F27 P6 A1 against human CYP26A1

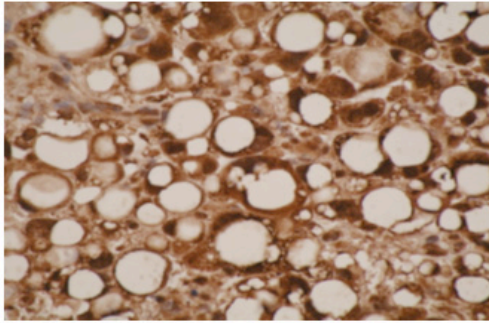
Product Description	Monoclonal antibody directed against human CYP26A1. Supplied as hybridoma supernatant (unpurified).
Storage	Store at -20°C . Avoid repeated freeze-thaw cycles.
Intended Use	For laboratory (research) purposes only.
Isotype	IgG2b, k
Clone	F27 P6 A1
Immunogen	Ovalbumin-conjugated synthetic peptide; PARFTHFHGE (amino-acids 487-496 of human CYP26A1)
B Cell Donor	BALB-c mouse
Fusion Partner	Ag 8563
Positive Control	IHC: formalin-fixed, paraffin-embedded liposarcoma sections. Western blot: recombinant CYP, 18.2 kDa C-terminus region.
Cross-reactivity	Western blot: recombinant CYP3A43, 17.6 kDa C-terminus region.

Applications		Recommended Usage Conditions (conditions should be optimised by the user)
ELISA	✓	Undiluted (titre: 1/1000)
Western blot	✓	1/5 dilution
IHC	✓	1/5 dilution, antigen retrieval: microwave 20 min @ 800W in 10 mM citrate buffer, pH 6.0

Clinical significance	Results observed
Colorectal cancer	- CYP26A1 showed weak immunoreactivity in both normal and cancer tissues.
Ovarian cancer	- CYP26A1 showed a significantly greater intensity of immunohistochemical staining in ovarian cancer compared with normal ovary.
Breast cancer	- Absent/low CYP26A1 expression was associated with better breast cancer patient survival. Absent/low CYP26A1 expression was associated with better survival for patients who had received adjuvant tamoxifen.

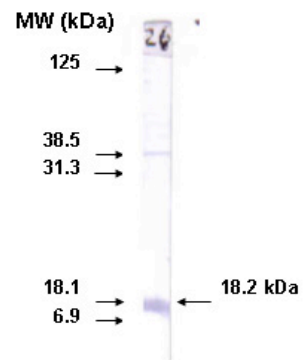
References	<p>Kumarakulasingham M, Rooney PH, Dundas SR, Telfer C, Melvin WT, Curran S, Murray GI (2005). Cytochrome p450 profile of colorectal cancer: identification of markers of prognosis. <i>Clin Cancer Res.</i> 11: 3758-3765.</p> <p>Downie D, McFadyen MCE, Rooney PH, Cruickshank ME, Parkin DE, Miller ID, Telfer C, Melvin WT, Murray GI (2005) Profiling Cytochrome P450 Expression in Ovarian Cancer: Identification of Prognostic Markers. <i>Clin Cancer Res.</i> 11: 7369-7375.</p> <p>Murray G I, Patimalla S, Stewart K N, Miller I D & Heys S D (2010) Profiling the expression of cytochrome P450 in breast cancer. <i>Histopathology.</i> 57: 202-211.</p>
-------------------	--

IMMUNOHISTOCHEMISTRY



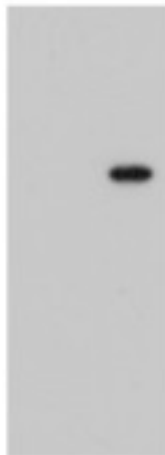
Antibody staining of liposarcoma cells

WESTERN BLOT OF CYP 26A1 EXPRESSED C-TERMINUS REGION



WB: over
expression
lysates

- +



CYP26A1: 1/5
dilution